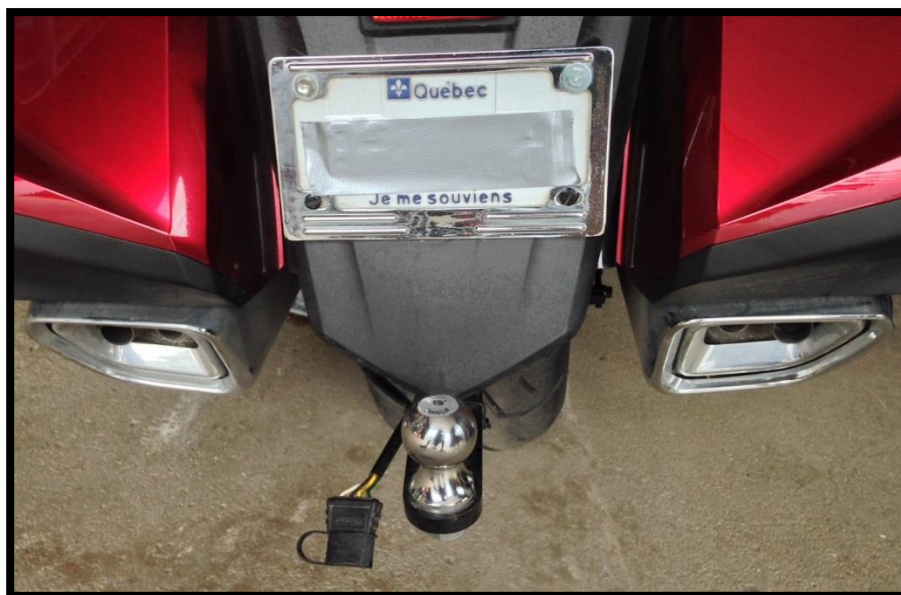


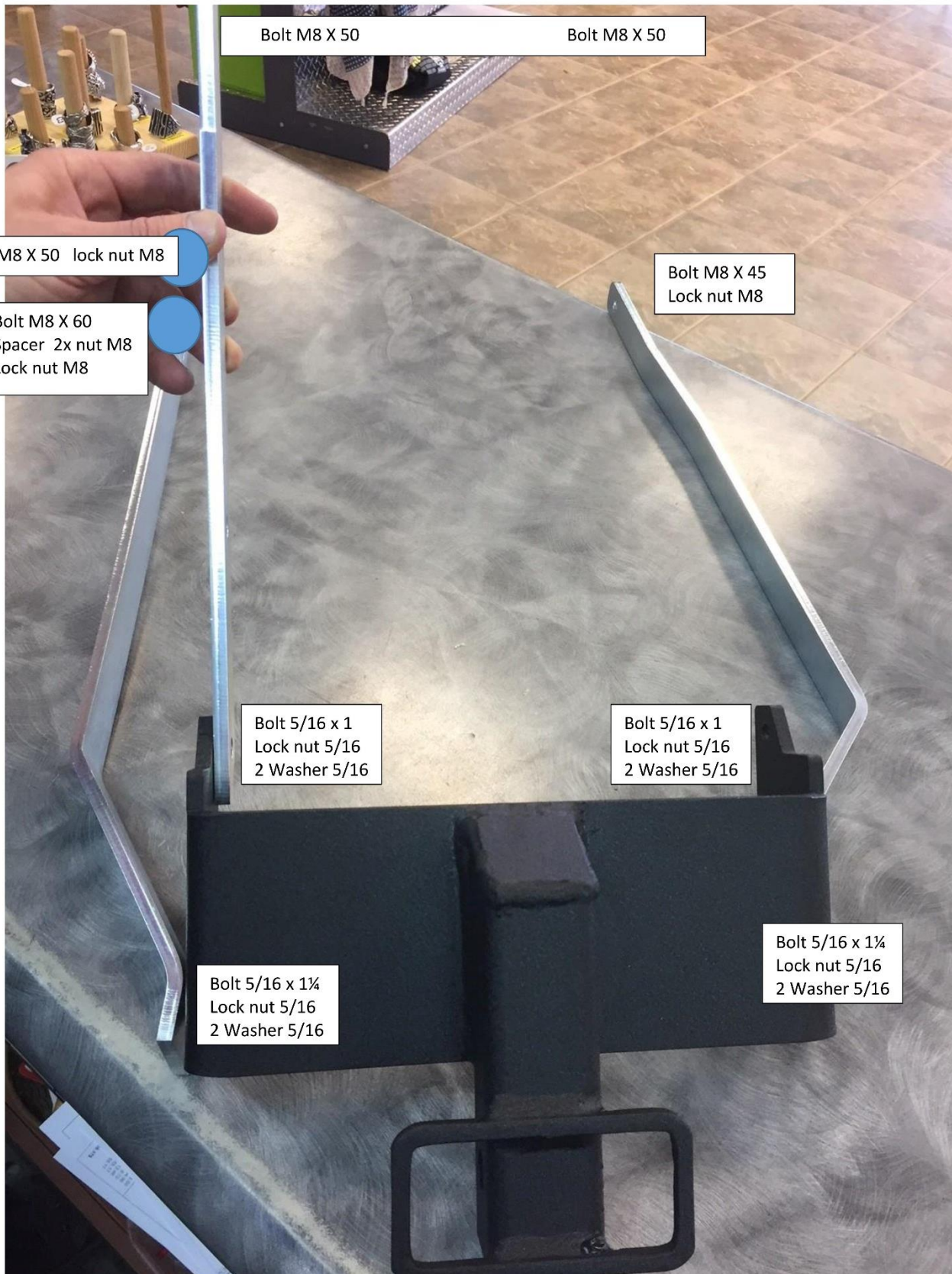
HONDA Goldwing 1800cc 2018 +

PIECES INCLUSES		PARTS INCLUDED	
1	Attache (8 pièces)	1	Hitch (6 composants)
1	Boule 1-7/8"	1	Ball 1-7/8"
3	Boulons M8X50MM	3	Bolts M8X50MM
1	Boulon M8X60MM	1	Bolts M8X60MM
1	Boulon M8 X 45MM	1	Bolt M8 X 45MM
2	Boulons 5/16 x 1	2	Bolts 5/16 x 1
2	Boulons 5/16 x 1¼"	2	Bolts 5/16 x 1¼"
2	Nut M8	2	Nut M8
3	Écrous nylon m8	3	Nylon nut m8
4	Écrous nylon 5/16	4	Nylon nut 5/16
5	Rondelles 5/16	5	Washer 5/16
1	Tige /goupille	1	Safety pin

1. Enlever les couverts latéraux, les tôles sous ces derniers (2 bolts côté gauche et 1 bolt côté droit à remplacer), le siège et l'aile arrière pour l'installation.
2. Installer toutes les composantes de l'attache, l'ordre importe peu. Serrer les boulons à la main, lorsque l'installation sera complétée, serrer le tout de façon sécuritaire.

1. *The rear fender center section, seat, side covers and shield under side covers (left side 2 bolts to replace and 1 bolt on right side) all that needs to be removed for installation.*
2. *Install all hitch components, the order does not matter. Finger tightens the bolts, when the installation is complete, securely tighten.*





Bolt M8 X 50

Bolt M8 X 50

Bolt M8 X 50 lock nut M8

Bolt M8 X 60  
Spacer 2x nut M8  
Lock nut M8

Bolt M8 X 45  
Lock nut M8

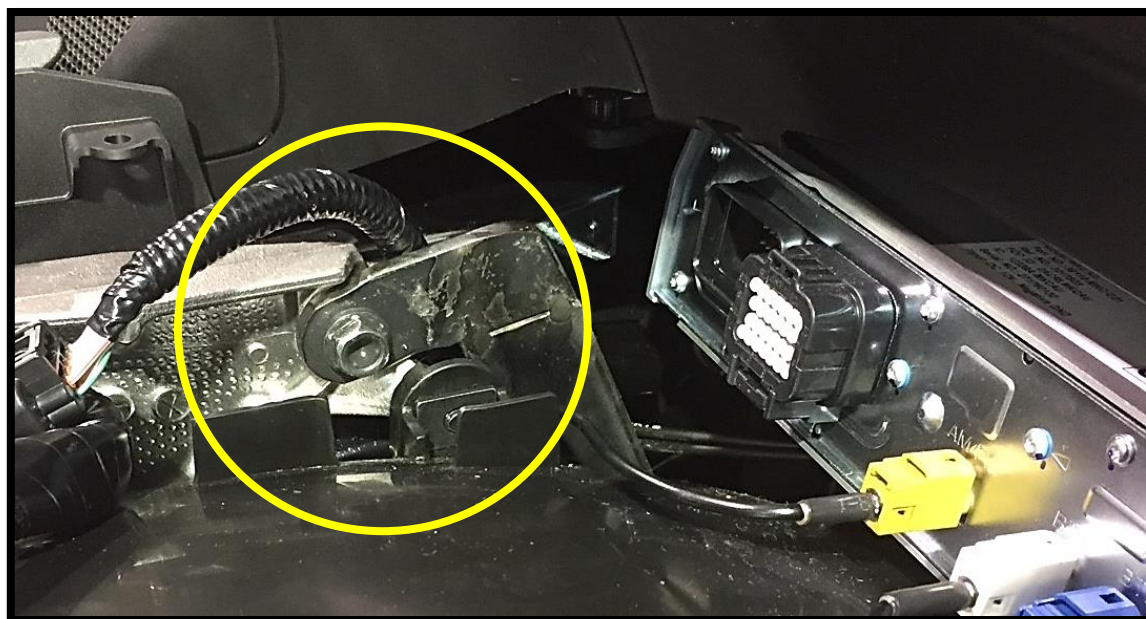
Bolt 5/16 x 1  
Lock nut 5/16  
2 Washer 5/16

Bolt 5/16 x 1  
Lock nut 5/16  
2 Washer 5/16

Bolt 5/16 x 1 1/4  
Lock nut 5/16  
2 Washer 5/16

Bolt 5/16 x 1 1/4  
Lock nut 5/16  
2 Washer 5/16

Side covers  
Couverts latéraux



Shields  
Tôles

