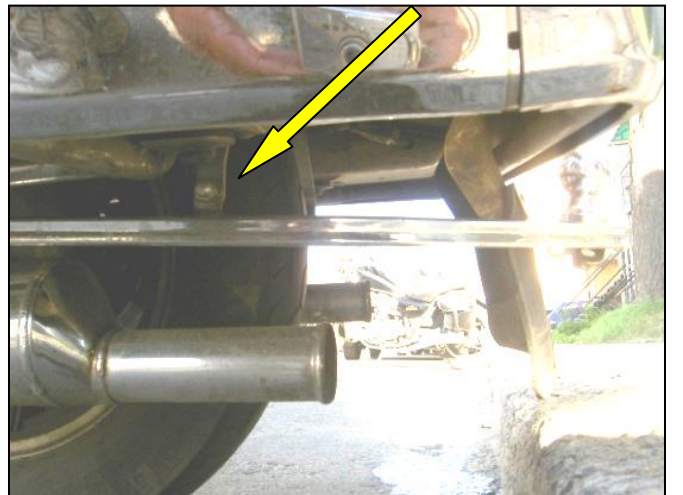
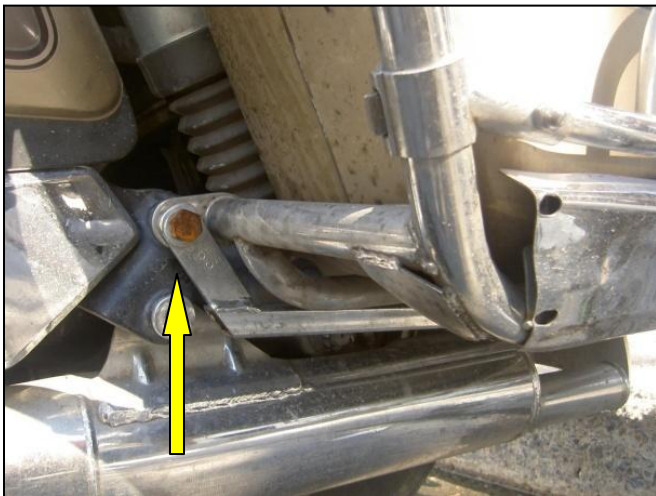


SUZUKI Cavalcade 1400 1985-1988

| PIECES INCLUSES                | PARTS INCLUDED       |
|--------------------------------|----------------------|
| 1 Attache                      | 1 Hitch              |
| 1 Boule 1-7/8''                | 1 Ball 1-7/8''       |
| 1 Plaque de chaîne de sécurité | 1 Safety chain plate |
| 2 Tiges aluminium              | 2 Aluminium hangers  |

- 1- Les deux côtés boulonnent sur le support des tuyaux d'échappement.
- 2- Les tiges d'aluminium boulonnent sous les valises.

- 1- Both side bolts on mufflers bracket.
- 2- Aluminium hangers bolt under saddlebags.



**ATTENTION !** L'installateur a la responsabilité de s'assurer que tout, y compris les composantes préassemblées, soit bien serré avant d'utiliser la moto.  
*It is the installer's responsibility to ensure that all of the fasteners (including preassembled) are tightened before operation of the motorcycle.*