

HONDA Valkyrie Custom 1500 cc 1997-2003

HONDA Valkyrie Interstate - Tourer 1500 cc 1999-2003

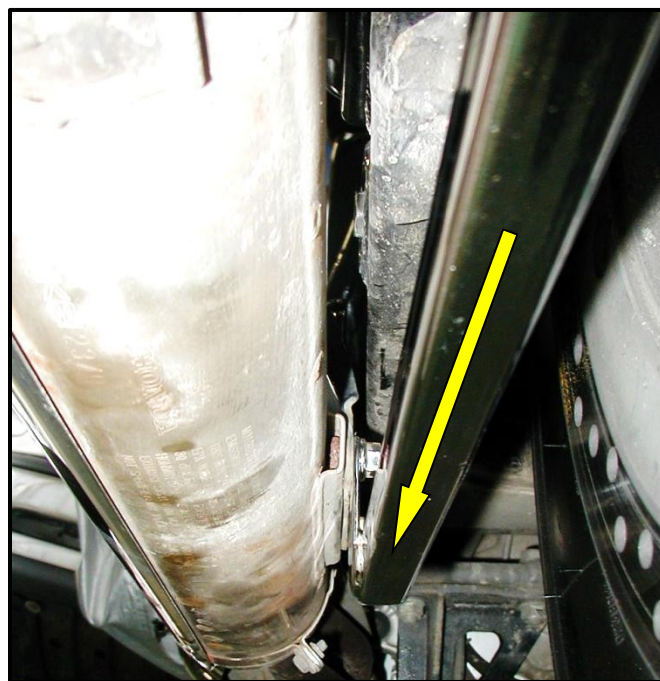
PIECES INCLUSES	PARTS INCLUDED
1 Attache	1 Hitch
1 Boule 1-7/8"	1 Ball 1-7/8"
1 Plaque de chaîne de sécurité	1 Safety chain plate
2 Tige aluminium 12¾" cc	2 Aluminium braces 12¾" cc
2 Tige aluminium 9½" cc (2 boulons 5/16x¾", 2 rondelles frein, 2 capuchons chrome 5/16)	2 Aluminium braces 9½" cc (2 bolts 5/16x¾", 2 lock washers, 2 cap nut 5/16)

1- Chaque côté boulonne sur le tuyau d'échappement, boulon arrière.

2- Bras d'aluminium boulonnent aux supports de valises.

1- Both sides bolt on the exhaust pipe, rear bolt.

2- Aluminium braces to be bolted to the saddlebags bracket.



ATTENTION ! L'installateur a la responsabilité de s'assurer que tout, y compris les composantes préassemblées, soit bien serré avant d'utiliser la moto.

It is the installer's responsibility to ensure that all of the fasteners (including preassembled) are tightened before operation of the motorcycle.